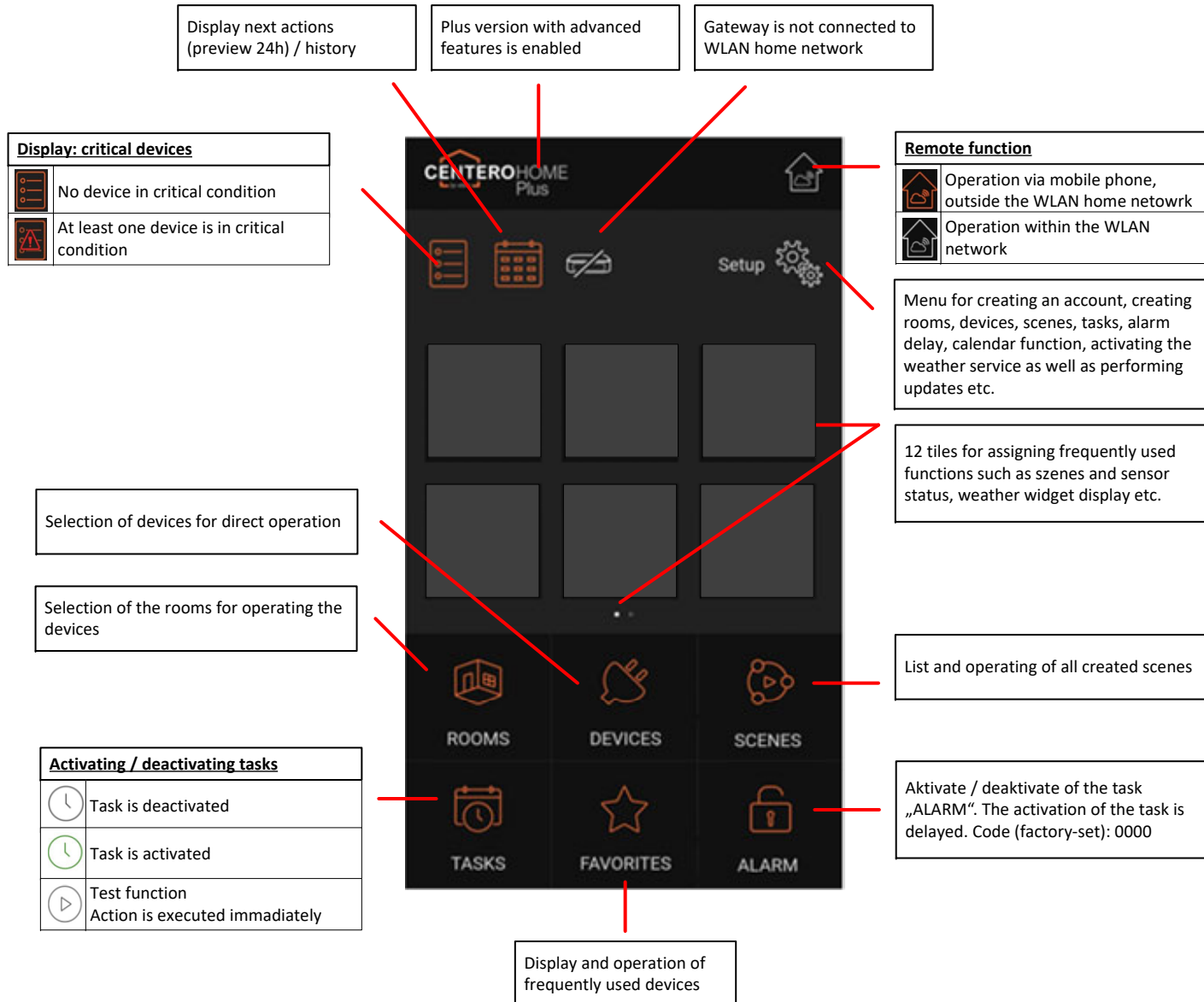


<b>1</b>	User interface
<b>2</b>	Explanations
<b>3</b>	Download app from store Integrate gateway into WLAN home network Create account Gateway setup
<b>4</b>	Create rooms and devices Set up cloud connections
<b>5</b>	Set up push devices, tasks, alarm tasks Create scenes
<b>6</b>	Create calendar functions
<b>7</b>	Activate Plus version Set up NETATMO, SONOS, DoorBird
<b>8</b>	Set up Amazon Alexa
<b>9</b>	Save, load, delete configuration in cloud Create Gateway backup Change password Delete account Reset app
<b>10</b>	Activate weather service Set language Set colour scheme Data protection Help Impressum
<b>11</b>	Reset gateway



# User interface



## Explanations

### Creating rooms and devices

As a first step, all rooms are created. The devices are bound in to the rooms. It makes sense to select the room-to-device assignment analogous to the real conditions.

### Tasks

A task is used to perform cross-device automations with multi-level conditions (if/then) and triggers (e.g. sensors, device states, time) as well as messaging.

### Scene

A scene is a chain of commands or a sequence of individual commands. This is triggered by a single keystroke. In this way, all individual commands available to the system can be linked to form individual scenarios. The lists of individual commands and pauses stored in a scene are then automatically executed one after the other (not simultaneously) according to the sequence of the individual command entries.

### Critical device

This function can be used to mark a device whose position can be critical during the user's absence, e.g. an extended awning. Based on the notification, the user can react accordingly.

### Action list

If the same actions are often required together to create tasks, they can be combined under setup/tasks/action lists. Tasks can thus be created comfortably.

### Cloud trigger / Cloud actions

If the same cloud triggers or cloud actions are often required together to create tasks, they can be combined under setup/tasks/cloud. Tasks can thus be created comfortably.

### Alarm task

CenteroHome is equipped with an alarm feature that makes your home a little safer during your absence. It is very easy to configure and use. The triggers and actions of the alarm can be individually configured, and it is also possible to activate the alarm task with a delay by setting a time of up to 120 seconds. This is useful, for example, if you are using a motion sensor and still need some time to leave the detection area of the sensor after the active switching.

Activating/deactivating is possible at home in your own network as well as remotely in remote mode. Basically it is necessary to enter a 4-digit pin.

### Weather service on start page

If no Netatmo weather station has been programmed, the current weather can alternatively be displayed via a weather service on the start page. To get relatively accurate weather data and forecasts, it is important to specify the location or GPS coordinates of the location.

### Calendar

This function is used to execute calendar-based events (if/then) in a defined period (for example, during the vacation period). This is done in 2 steps:

1. In a daily routine events (if/then) are programmed, e.g. if 19:00 o'clock, then close roller shutter.
2. The schedule is assigned to calendar days.

### Priority (tasks, calendar)

If the selection "Priority" is selected during the creation of a task or daily schedule in the device action, the device command is always executed when the task/daily schedule is executed. Even if the device is not in automatic mode otherwise.

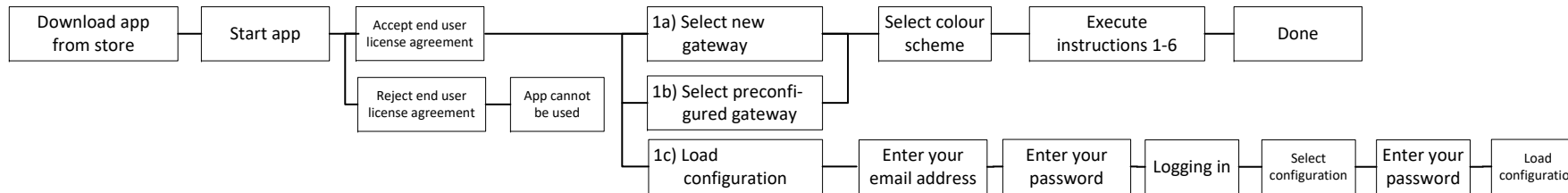
## Explanation of illustrations

	Command to be executed
	There ist a change to an external app / email address
	Notice / Tip without executing a command / an action

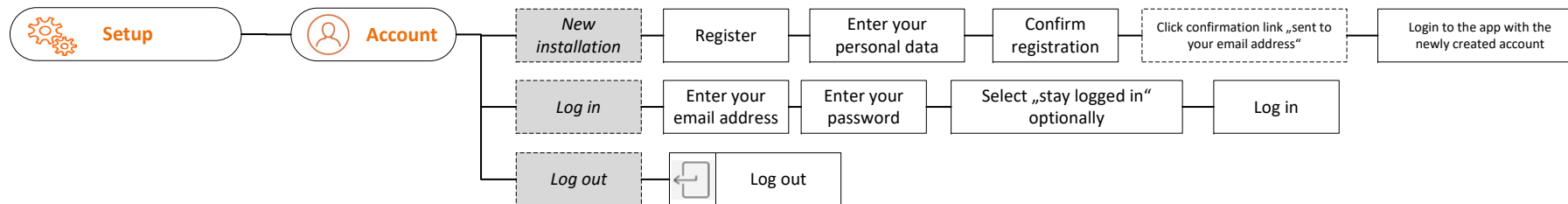
# Start-up

## 1) Download app from store and integrate gateway into WLAN home network

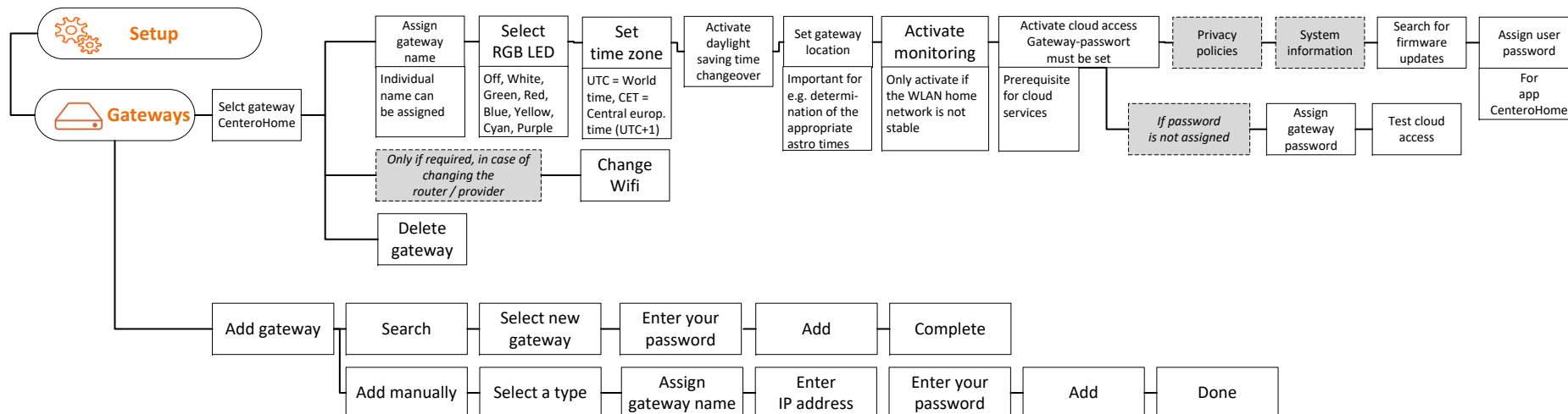
- 1a) New gateway without pre-configuration
- 1b) Preconfigured gateway with app CentroConnect
- 1c) Load configuration



## 2) Create account

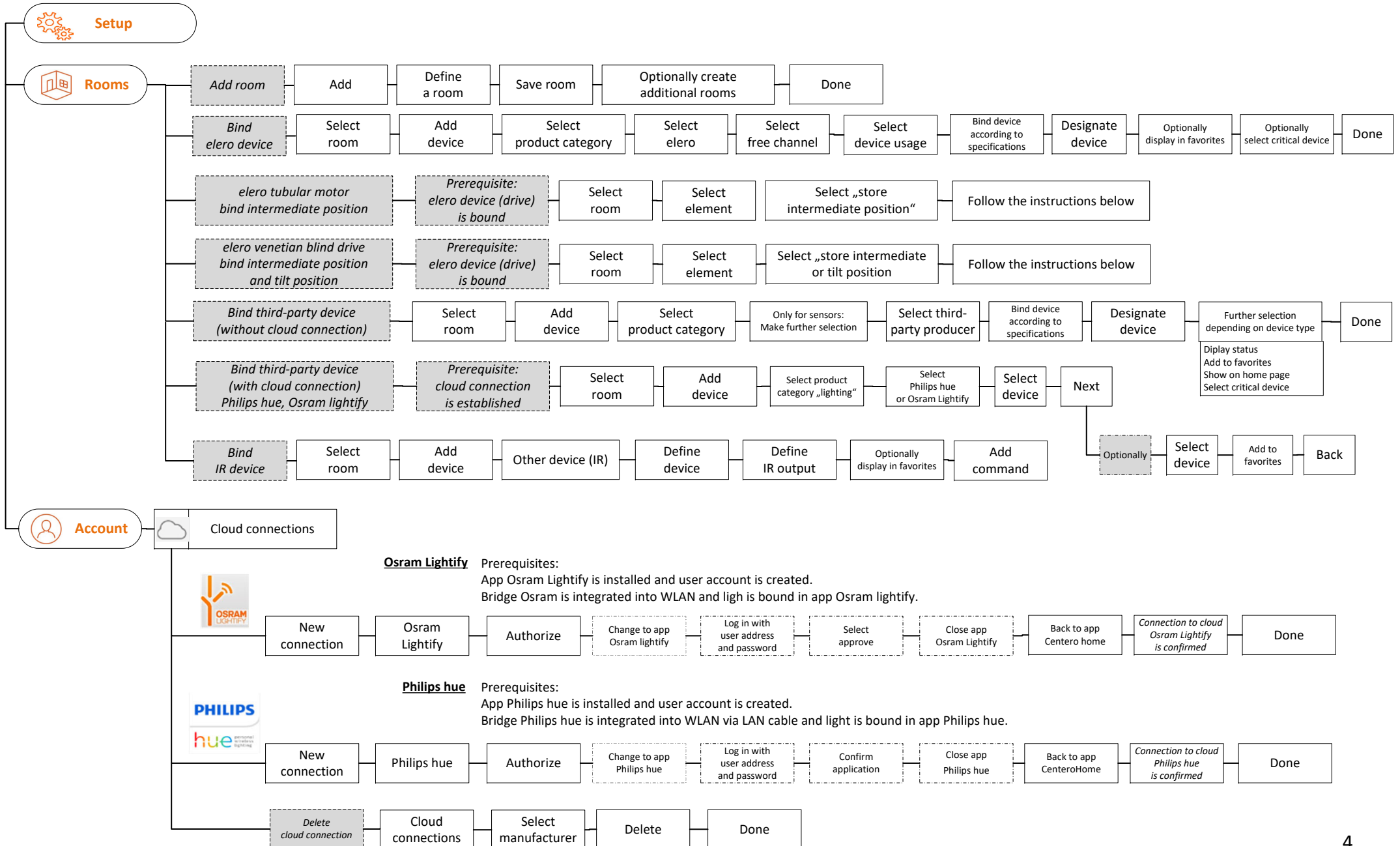


## 3) Gateway setup



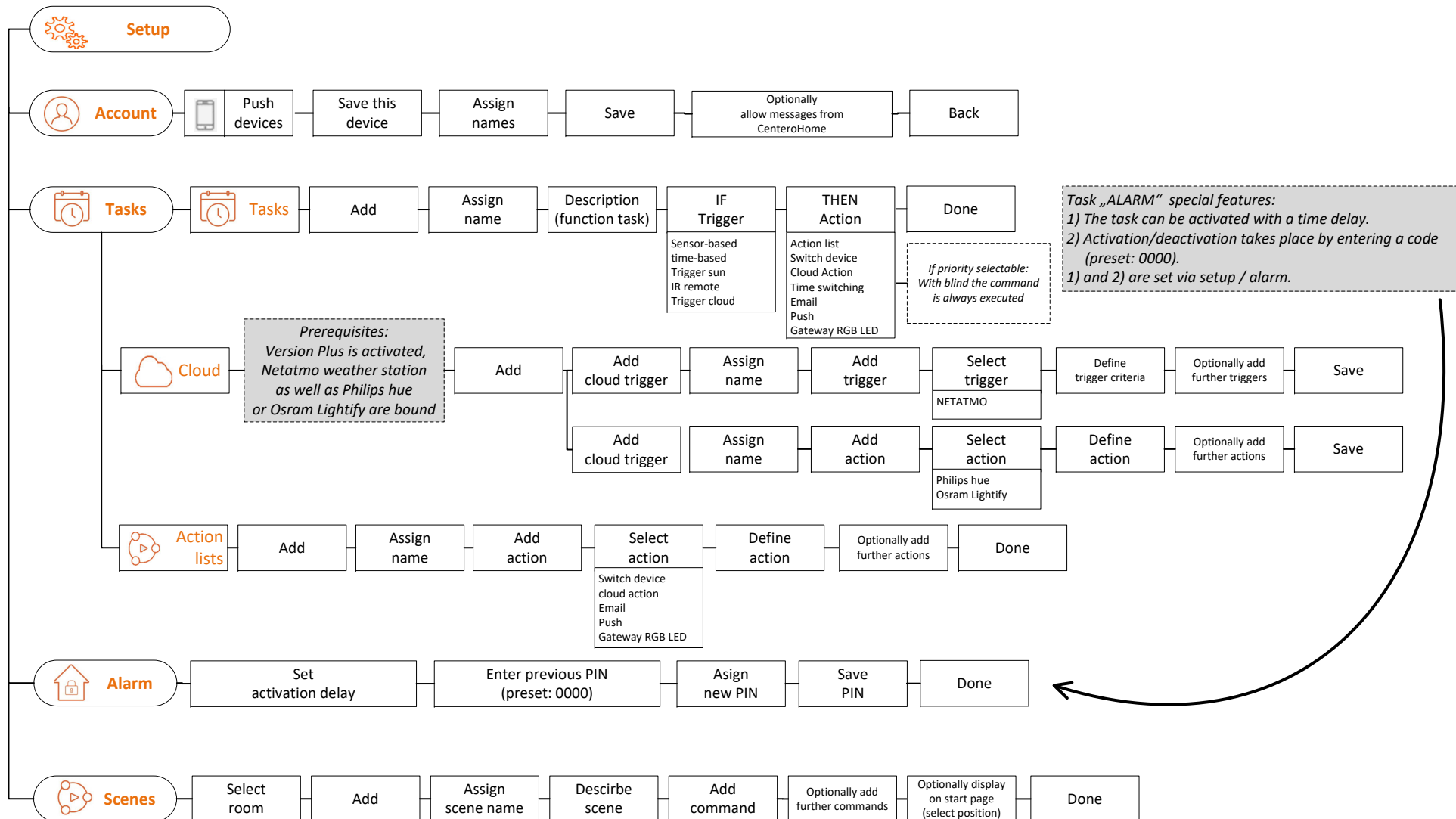
# Create rooms and devices

## Set up cloud connections

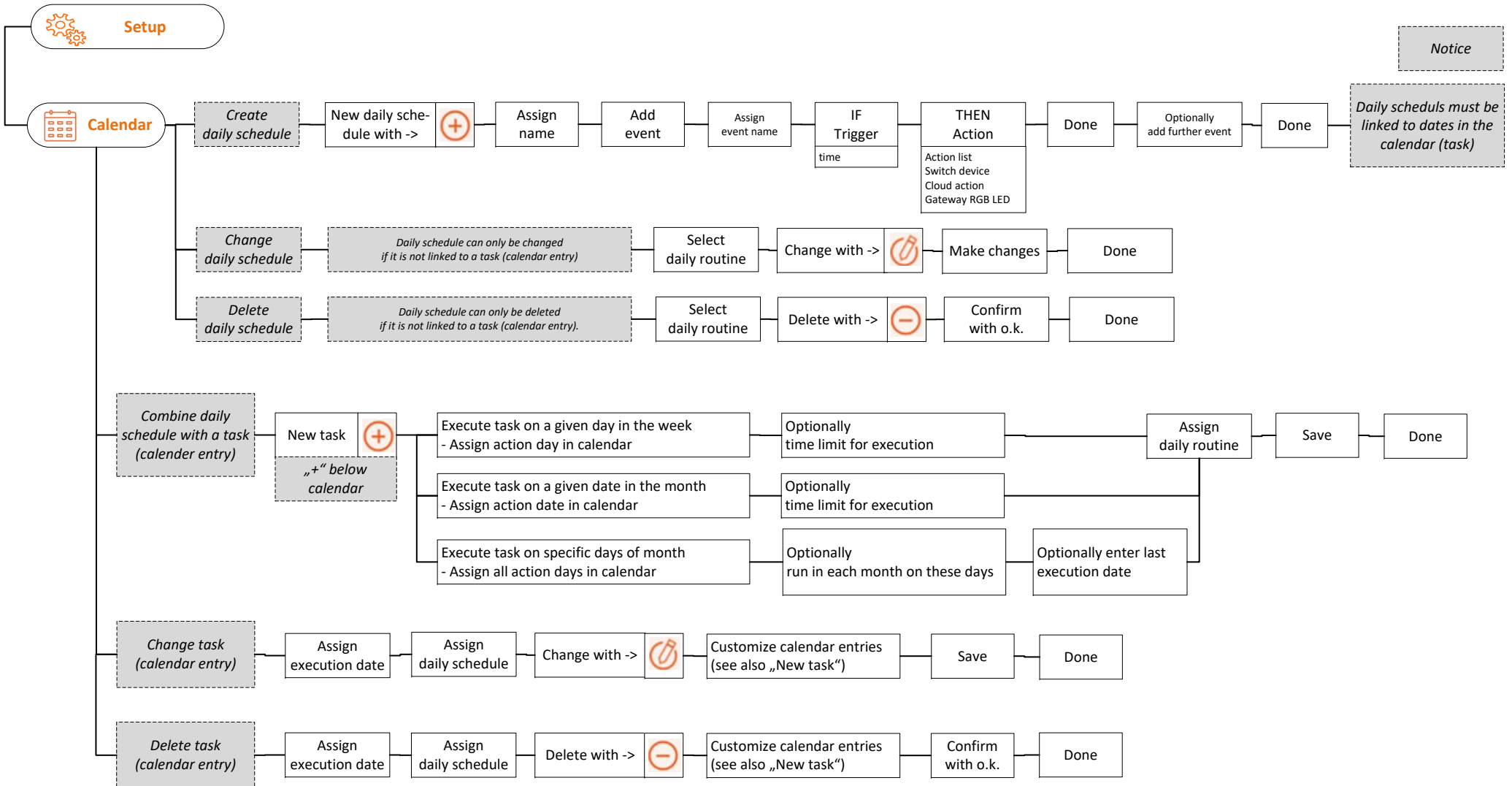


# Set up push devices, tasks, alarm tasks

## Create scenes



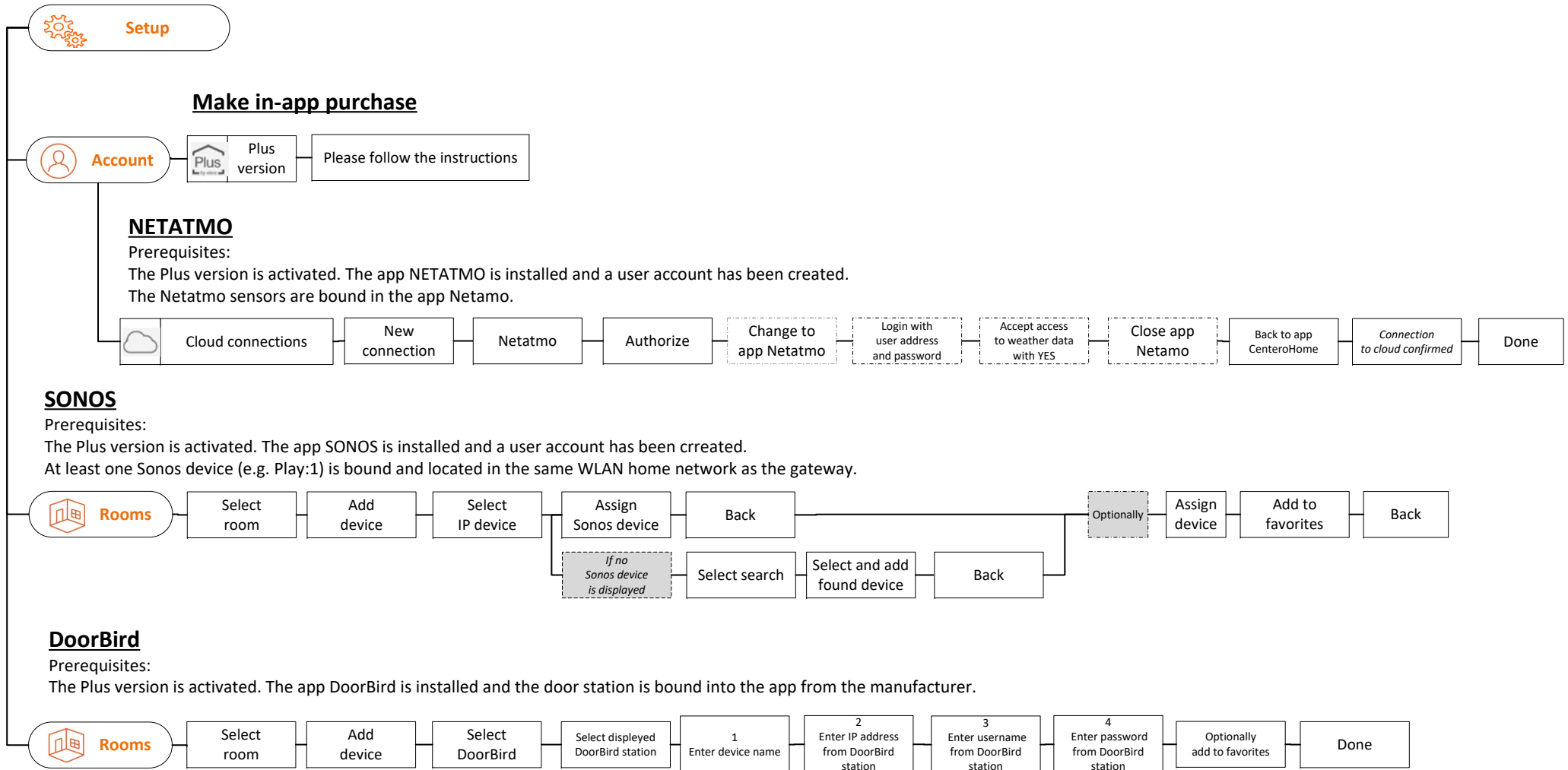
# Create calendar function



# Activate Plus version

## Set up NETATMO, SONOS, DoorBird

After the in-app purchase and the activation of the Plus version, additional functions are available, which are activated as follows:



Notice: The interphone system works only with the original app DoorBird. A change is possible by tapping on the Bird symbol.



# Set up Amazon Alexa

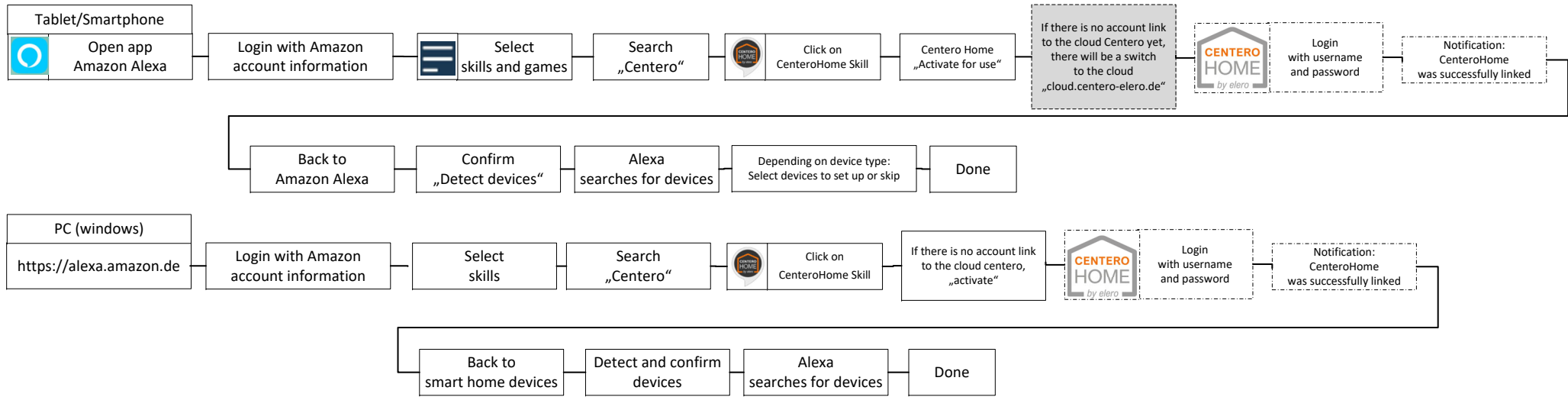
**After the in-app purchase and the activation of the Plus version, additional functions are available, which are activated as follows:**

In order to be able to operate the devices with Alexa, the following prerequisites must be fulfilled:

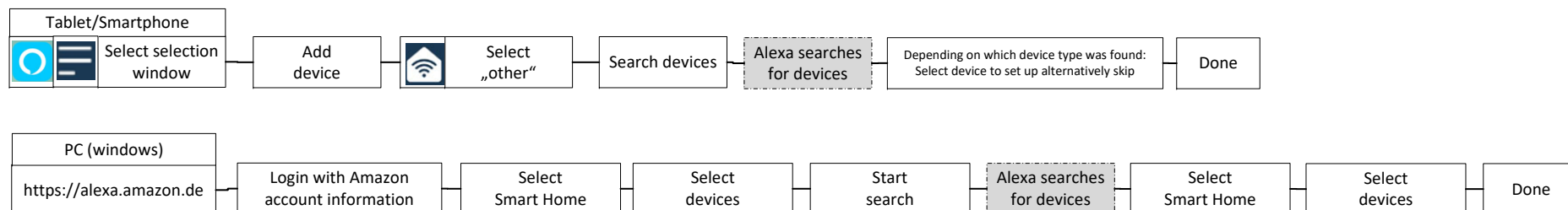
- You have an Amazon account
- You have downloaded the app Alexa to your smartphone / tablet
- The current CenteroHome configuration \* can be found in the cloud.

\* Only the devices for voice control are stored in the app Amazon. Scenes, tasks, calendar functions are not transmitted. Scenes (routines) can be created separately in the app Alexa.

## Activate skill and load configuration

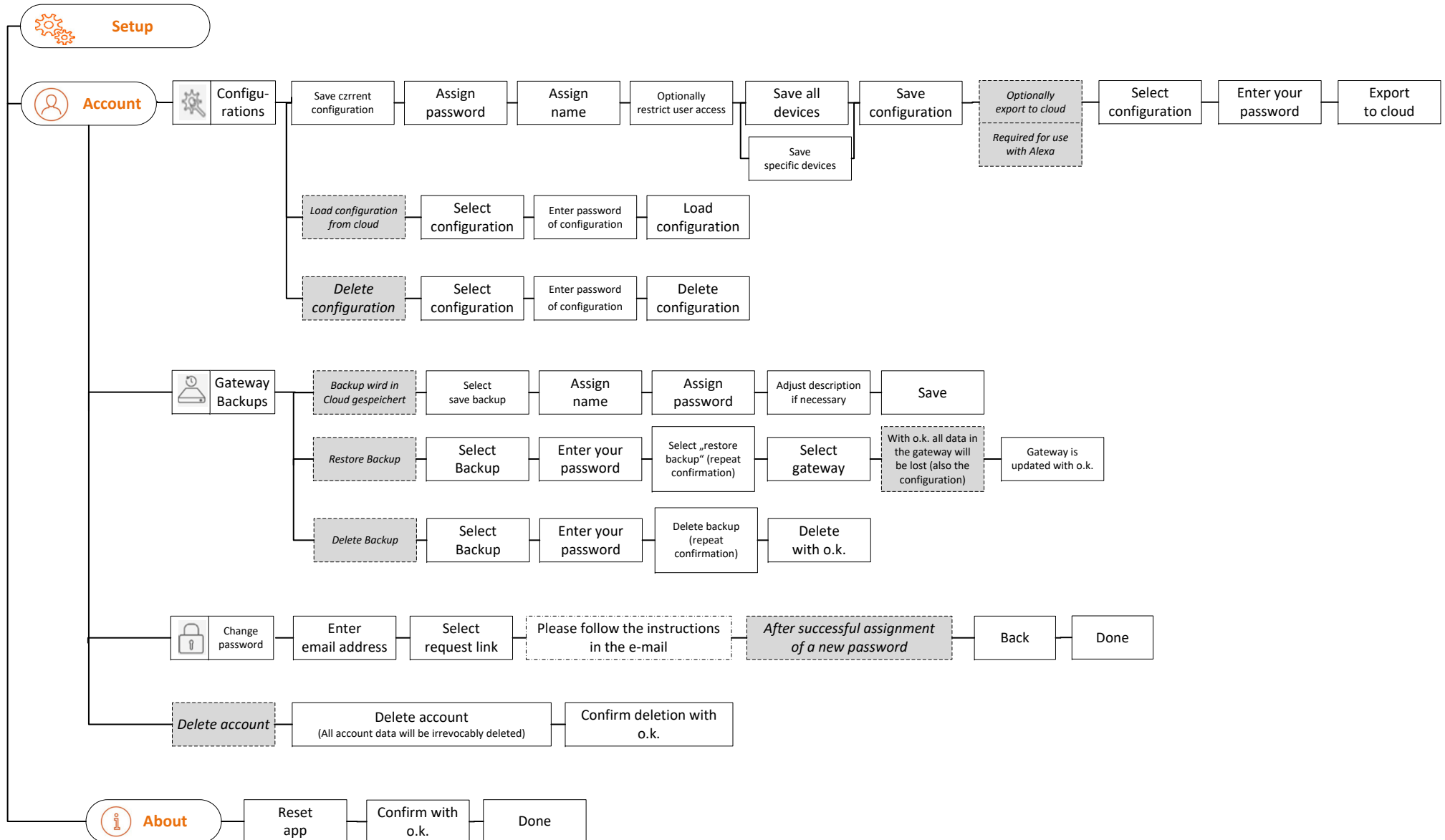


## Add devices (Prerequisites: You are logged in to the app Alexa, the account link to the cloud is active and it contains the current configuration Centero home)



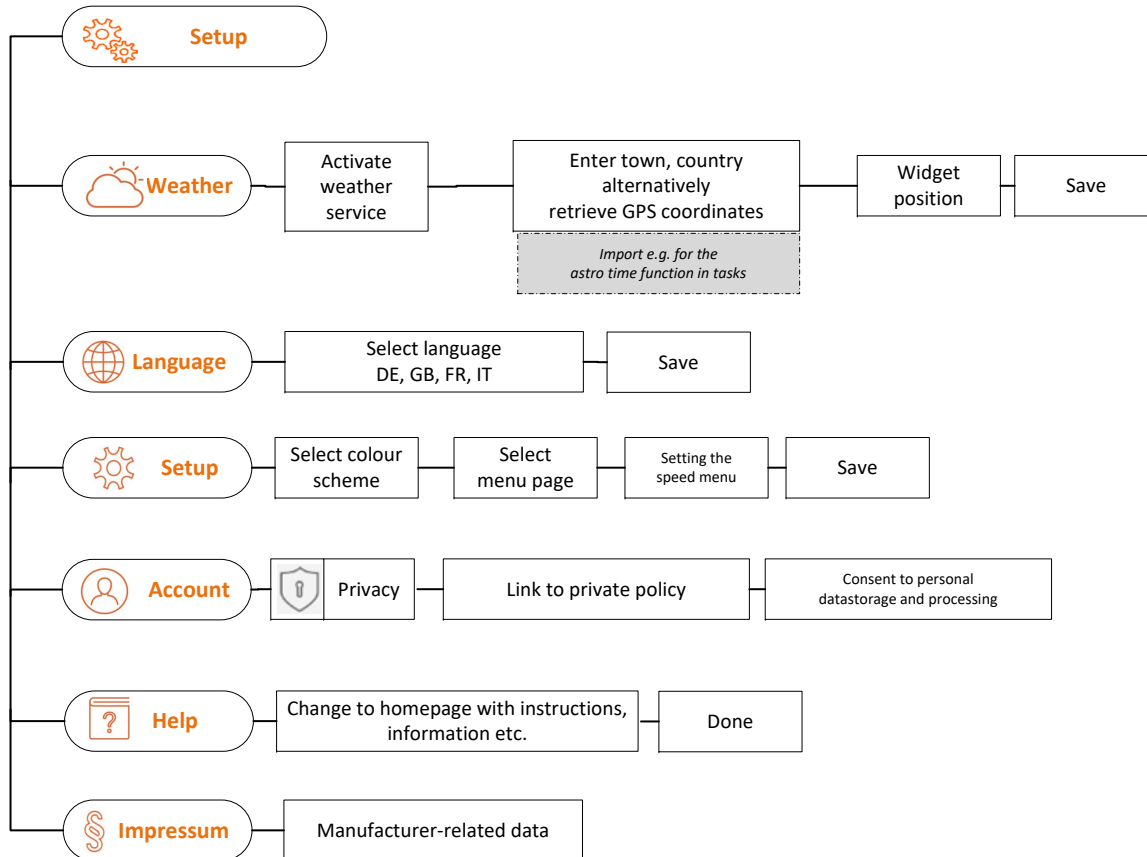
Save, load, delete configuration in cloud  
 Create gateway backup  
 Change password

Delete account  
 Reset app



Activate weather service  
Set language  
Set colour scheme

Data protection  
Help  
Impressum



## Reset gateway

**Important note:**

By pressing the reset button for different lengths of time, the gateway is gradually reset to the factory setting.

Press and release the reset button while the status LED is lit green:  
Network settings are reset!



Press and release the reset button while the status LED is lit orange:  
User password and WLAN settings are reset!



Press and release the reset button while the status LED is lit red:  
Gateway is reset to factory status!

